


QOV Mystery 2

A five part mystery quilt by **Sandy Berg** for

 **Raspberry Bramble Designs**

Copyright May 2013 – All Rights Reserved

Written Permission required to copy

This is a mystery quilt pattern in five parts. In each part you will have some cutting instructions and some piecing instructions. In order to complete the quilt, you should have a basic knowledge of piecing and rotary cutting skills. Careful measuring, cutting, and piecing will ensure that you will be pleased with the finished product.

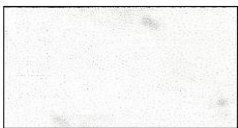
Fabric Requirements for the entire quilt top – Finished size 72” x 72”

This pattern assumes that your fabric will be at least 40 inches of usable fabric. If your fabric differs from this measurement, either more or less, you might need to adjust the amount of fabric you get. The fabric requirements also allow for some extra fabric in case of errors in cutting or piecing, but I have tried to come close to the actual requirements.

The fabrics in this quilt should not involve a large scale print. The best fabrics to select will be small to medium-scale prints or fabrics that read as a solid color. The fabrics shown below on the left are the ones that appear in the instructions and are meant to help you with the instructions. There is space in the right hand column for you to add a small piece of your fabric for each choice – not necessary, but often helpful.

As Pictured in the Instructions

Yardage Your Choice



Background – White, off-white or light beige. This should be a very small print or a fabric that reads as a solid.

2-1/2 yards



Red - This may be a solid, a small scale print or a print that reads as a solid.

3/8 yard



Gold - This may be a small or medium scale print or a fabric that reads as a solid.

7/8 yard

Blue Fabrics:



Blue #1 – This fabric would be best if it was a small- or medium-scale Blue fabric. It could also be one that reads as a solid.

1-3/8 yards



Blue #2 (Medium) – Small scale print or one that reads as a solid. This will be used in the blocks and as the Outside border.

2 yards



Blue #3 (Light, or Medium Light) – Small scale print or one that reads as a solid.

5/8 yard

Binding Fabric – If you plan to use the same fabric you selected as your Outside border fabric (see Blue #2), be sure to add this amount to that fabric.

5/8 yard