

QOV 6 Mystery

This is a five-part mystery pattern designed to be used to create a Quilt of Valor. In each part you will have some cutting instructions and some piecing instructions. In order to complete the quilt, you should have a basic knowledge of piecing and rotary cutting skills. Careful measuring, cutting, and piecing will ensure that you will be pleased with the finished product. Measuring and squaring up units as you go along (sizes designated in the pattern) will help to ensure a better product.

The fabric yardage requirements assume 42" of usable fabric after removing the selvages from the fabric. If your fabric differs from this measurement, either more or less, you might need to adjust the amount of fabric you purchase. The fabric requirements also allow for some extra fabric in case of errors in cutting or piecing.

The fabrics shown below on the left are the ones that appear in the instructions and are meant to help you with the instructions. There is space in the right hand column for you to add a small piece of your fabric for each choice – not necessary, but often helpful.

Fabric Requirements for the entire quilt top – Finished size 60" x 80"

Fabrics As Pictured In the Instructions

Your Choice



Background Fabric: 3 yards

Light in color (white, off-white, beige, very pale blue, etc); may be a very small scale print, but should read as a solid.



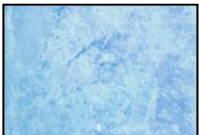
Dark Blue: 7/8 yard

Medium-dark to dark blue fabric; again, this may have a small scale print or something that reads as a solid.



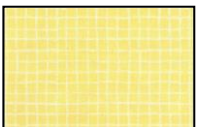
Medium Blue: 1/2 yards

Medium blue fabric; may have a small scale print or something that reads as a solid.



Light Blue: 1-1/8 yards

Light blue fabric; may have a small scale print or something that reads as a solid.



Gold: 1/3 yard

A gold or tan fabric; may be a small scale print or something that reads as a solid.



Red: 3/4 yard

A red fabric; may be a small scale print or something that reads as a solid.

Binding: 5/8 yard